



PAKISTAN NOTICES TO MARINERS

WEEKLY EDITION 51

Notice: 148/22

24 DEC 2022

Copies of these Notices can be obtained gratis from Mercantile Marine Department and PN Chart Depot / NAVAREA IX Headquarters, 11 Liaquat Barracks Karachi. The same can be downloaded from web: hydrography.paknavy.gov.pk.

CONTENTS

- I NOTICES TO MARINERS**
- II REPRINTS OF RADIO NAVIGATIONAL WARNINGS**
- III CORRECTIONS TO SAILING DIRECTIONS**
- IV MARINE INFORMATION**

Mariners are requested to inform the Hydrographic Department, Naval Headquarters, 11 Liaquat Barracks, Karachi, Pakistan, immediately on the discovery of new dangers, or suspected dangers to navigation and of changes or defects in aids to navigation noticed in NAVAREA IX and of shortcomings in PAK charts or publications.

Tel : + 92-21-48506151
 + 92-21-48506152
Fax : + 92-21-99201623
 + 92-21-35867737

E-mail : hydropk@paknavy.gov.pk
 hydrpk@gmail.com

Web : hydrography.paknavy.gov.pk.

MUHAMMAD WASIM
Captain Pakistan Navy
Hydrographer

Hydrographic Department, Naval Headquarters, 11 Liaquat Barracks, Karachi 75530, PAKISTAN


PART – I
NOTICES TO MARINERS

148/22 EGYPT - Red Sea Coast - NM Block. Restricted area.

BA Chart 2132 (INT 7138) (Panel B, Ras Budran Terminal) [*previous update 5117/20*] WGS84 DATUM

Insert the accompanying block, centred on: 28° 54'·6N., 33° 09'·1E

BA Chart 2373 (INT 7136) [*previous update 4848/22*] WGS84 DATUM

Insert limit of restricted area, , joining:

28° 55'·10N., 33° 11'·25E.
28° 53'·52N., 33° 07'·40E.
28° 54'·35N., 33° 07'·00E.
28° 55'·77N., 33° 11'·12E.

Source: Admiralty Notice to Mariners No. 5072/2022.

PART – II
RADIO NAVIGATIONAL WARNINGS

509/22. SOUTHERN GULF. UAE. Charts BA, 2837, 2889, 3177 and 3179. Seismic survey in progress from 18 to 24 Dec 22 in following areas:

Receiver Boundary

24-46.39N 053-27.91E
24-46.27N 053-34.93E
24-41.17N 053-34.83E
24-41.28N 053-28.13E
24-41.44N 053-27.81E

Source Boundary

24-49.64N 053-27.89E
24-49.53N 053-34.55E
24-41.18N 053-34.37E
24-41.28N 053-28.13E
24-41.49N 053-27.73E

Fishing, anchoring and diving operations are strictly prohibited in survey areas. Mariners are advised to navigate with caution and maintain listening watch on channels 16/72. Cancel this message on 242359 UTC Dec 22.

510/22. SOUTHERN GULF. UAE (Ras Al Khaimah). Charts BA 2837, 2888, 3174 and 3404. Geophysical survey in progress in area bounded following coordinates:

25-52.32N 055-57.23E
25-51.34N 055-59.51E
25-45.46N 055-54.41E
25-45.92N 055-52.67E

Around 2000 sensors marked with orange and yellow buoys in a linear manner at every 50 meter distance with 600 meters interval between each line will be deployed. Buoy deployed near the entrance of port and borders will be equipped with red flashing lights. Mariners cautioned.

511/22. SELF CANCELLING. Cancel Navarea IX warning 471 of 2022.

512/22. CENTRAL GULF. Qatar. Charts BA 2523, 2883 and 2886. Rig MODU 'Sapphire Driller' will be moved by vessels Halul-70, Bourbon Liberty-304 and Halul-69 on 22 Dec 22 from its current position 26-26.85N 051-58.28E to 26-35.16N 051-55.39E. Mariners are requested to navigate with caution and maintain listening watch on VHF channels 16/69. Cancel this message 282359 Dec 22.

513/22. RED SEA. Saudi Arabia (Yanbu). Charts BA 158 and 327. Yanbu Commercial Port mooring buoy B-3 in position 23-57.82N, 038-01.30E reported missing. Mariners cautioned.

514/22. SOUTHERN GULF. UAE. Charts BA 3796 and 3778. CB-2 light buoy in position 24-10.31N, 052-42.34E reported unlit. Mariners cautioned.

515/22 SELF CANCELLING. Navigational Warnings Inforce:

2021 series: 024, 086, 109, 223, 224, 397, 399, 408, 445, 448, 490 and 491.

2022 series: 021, 027, 039, 067, 080, 095, 102, 112, 142, 144, 180, 185, 198, 211, 218, 220, 227, 257, 294, 295, 296, 311, 313, 319, 325, 328, 331, 332, 356, 357, 358, 366, 377, 380, 402, 408, 417, 424, 432, 435, 440, 443, 465, 468, 477, 478, 479, 480, 483, 485, 487, 489, 497, 501, 502, 505, 506, 509, 510, 512, 513 and 514.

COASTAL WARNING**141/22. SELF CANCELLING.** Navigational Warnings Inforce:

2020 Series: 143.

2021 Series: 136.

2022 Series: 024, 027, 060, 063, 081, 082, 096, 130 and 134.

WPGs Inforced 2022: 39

WPGs Cancelled 2022: Nil

PART – III**CORRECTIONS TO SAILING DIRECTIONS****NP64 Red Sea and Gulf of Aden Pilot
(2021 Edition)****Djibouti – Golfe de Tadjoura –
Doraleh Container Terminal — Berth; depths****326**Paragraph 14.77 1 lines 1-5 *Replace by:*

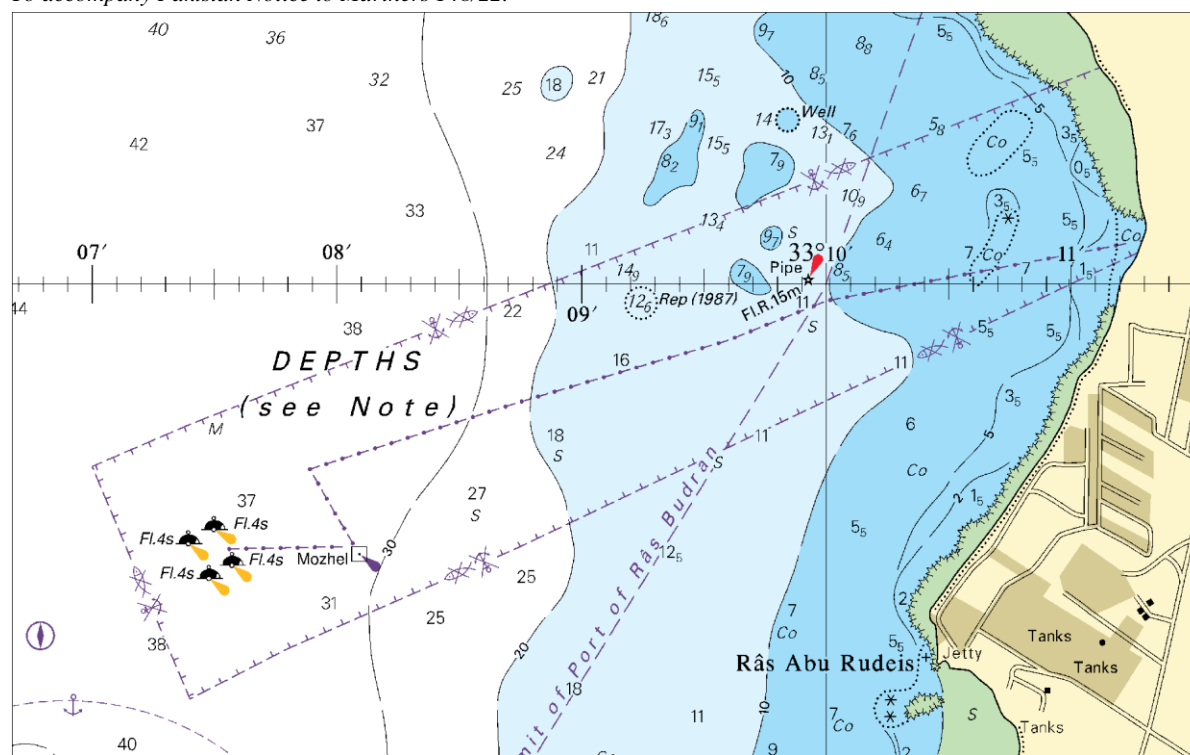
- 1 The terminal (11°35'·92N 43°06'·38E), with a 1050 m long quay, can handle two post-Panamax container vessels simultaneously, with depths alongside of about 15 to 17 m. The corners of the terminal are marked by pylons from which obstruction lights are displayed.

UKHO

[NP64-No 6-Wk 51/22]**PART – IV****MARINE INFORMATION**

Nil

To accompany Pakistan Notice to Mariners 148/22.



Block for BA Chart No.2132

NP77, Vol D Edition 2022. Weekly Edition No. 51, Dated 22 December 2022.
Last Updates: Weekly Edition No. 48, dated 01 December 2022.

D1076 FR, L1, 33850	- La Turballe. Jetée de Garlahy	47 20-56 N 2 30-86 W	Fl(4)WR 15s	..	W10 White column, red R 7 top 11	(fl 0-5, ec 2) x 3, fl 0-5, ec 7. R073°-328°(255°), W328°-073°(105°)
*	*	*	*	*	*	*
D1559-45 ES, I, 01270	- Muelle Félix Ducasse	43 26-88 N 3 48-87 W	Fl(2+1)G 10s	10	3 Green column, red band 6	fl 0-5, ec 0-5, (fl 0-5, ec 4) x 2
					*	
D1559-83 ES, I, 01315	- Dársena Norte de Raos, Muelle Raos 3. Head	43 26-69 N 3 48-89 W	Q G	10	3 Green Δ on green and white column 6	..
					*	
D7362-856	- Al Heel. AH-5A	24 40-90 N 54 37-00 E	Q(9)W 15s	..	5 ∇ on yellow beacon, black band	..
	*	*	*		*	*
D7362-904	AL SADAR - Al Shellela. AH-20	24 39-63 N 54 36-83 E	Fl R 3s	..	5 Red \square on red beacon	..
*	*	*	*	*	*	*
D7363-3685	- Al Jubail. J-22A	24 31-65 N 54 27-89 E	Fl Y 5s	..	5 Yellow beacon	..
*	*	*	*	*	*	*